

Intermediate

Making and Animating a Plasma Tube

Now we'll go to the FX workspace and shape it into the left endcap. (*pic. 21*) [Continued](#) [Begin](#) [2](#) [3](#) [4](#) [5](#) [6](#) [7](#) [8](#)

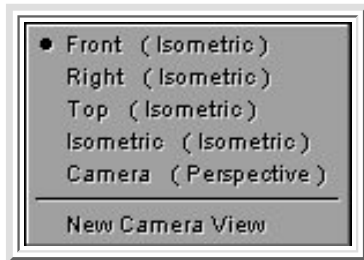
While in the front view in the FX workspace (*pic. 22*)



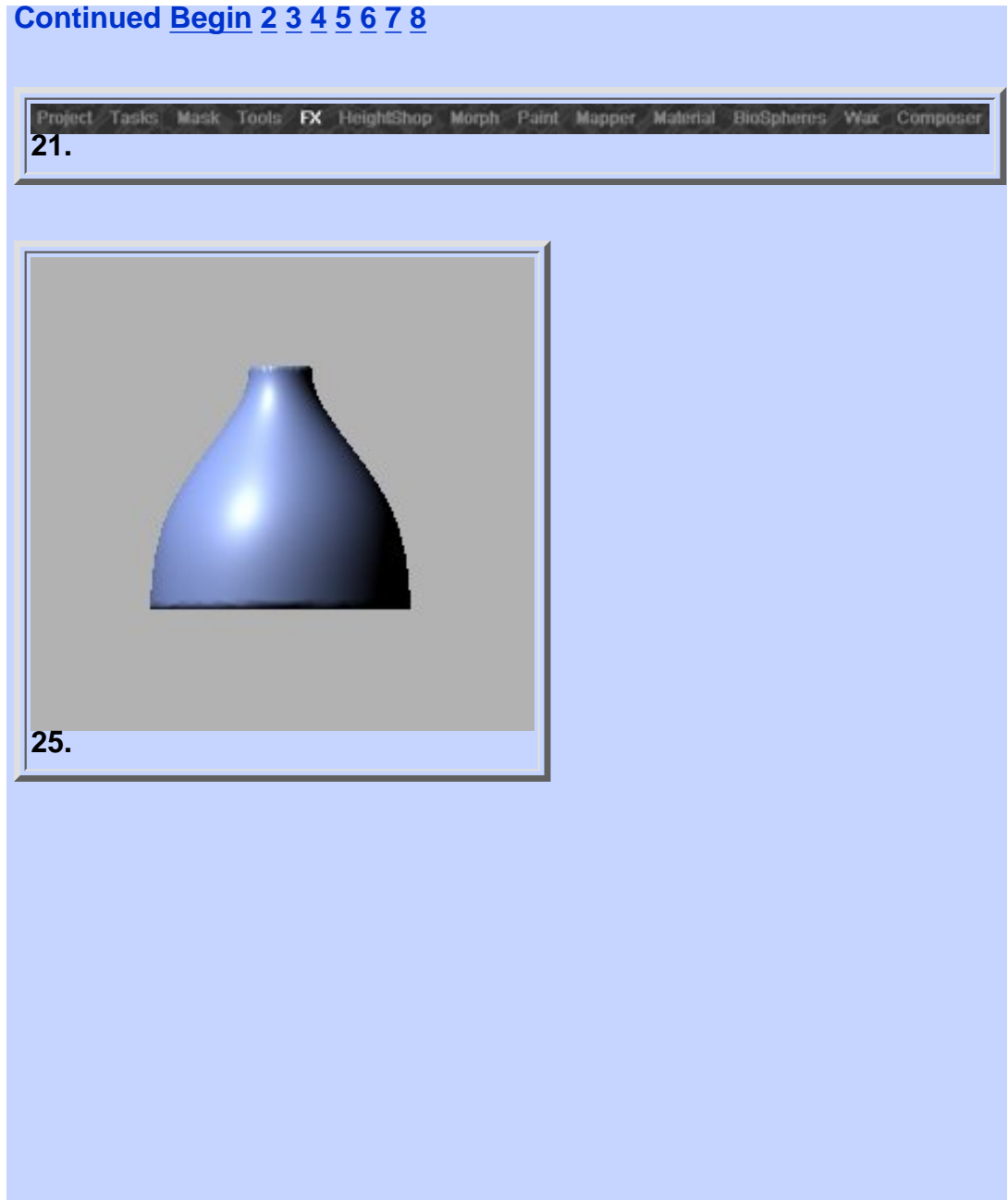
Select the bottle tool and bottle the endcap -85.000, do this by clicking in the window and dragging to the left. (*pic. 23/24/25*)



Simple enough, but all that's needed. So now go back to composer and select front off the camera pull down menu. (*pic. 26*)



Then on the project list unhide the biosphere by clicking on the grayed out eye symbol, then select the endcap by clicking on the name, this will highlight the name in black and turn the endcap red in the workspace



showing that it's selected. (pic. 27/28)



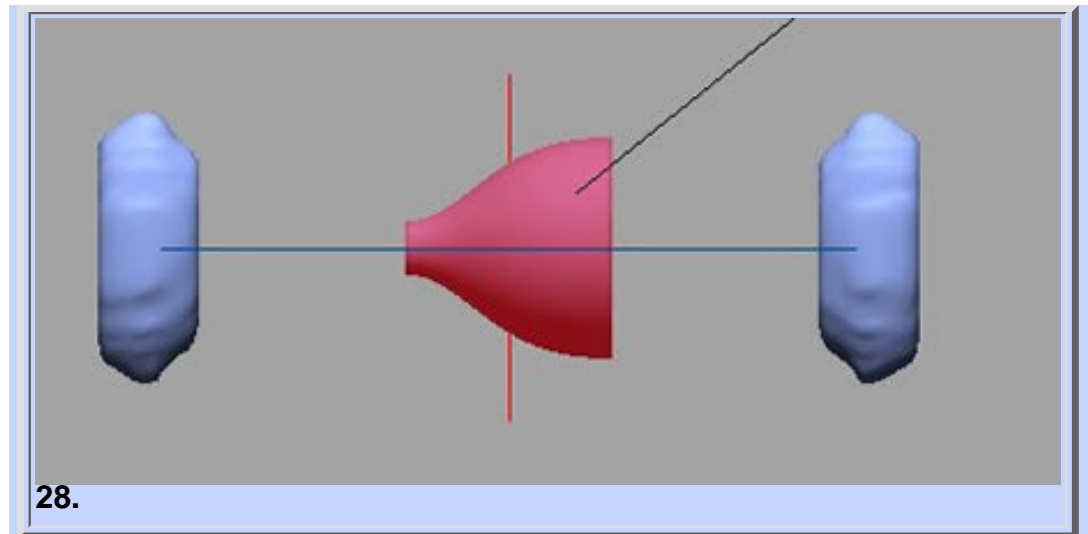
Select the xform move X tool and move the endcap by clicking in the window and dragging left. Until it is just left of the biosphere part on the left side. (pic. 29/30)



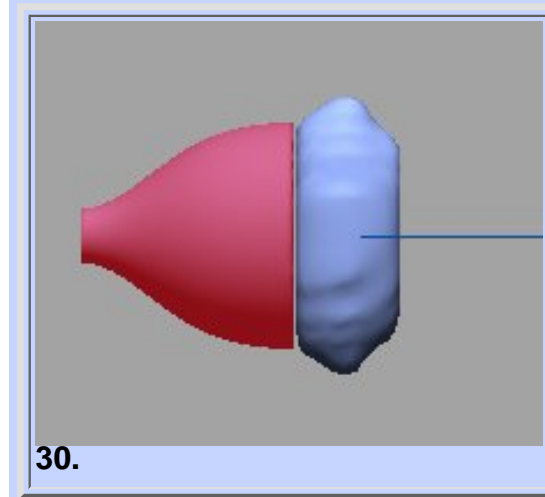
Now using the xform scale tool, size the endcap till it is just a little bigger than the biosphere. (pic. 31/32)



Then right click on the endcap and on the pop up menu select duplicate. (pic. 33)



28.



30.

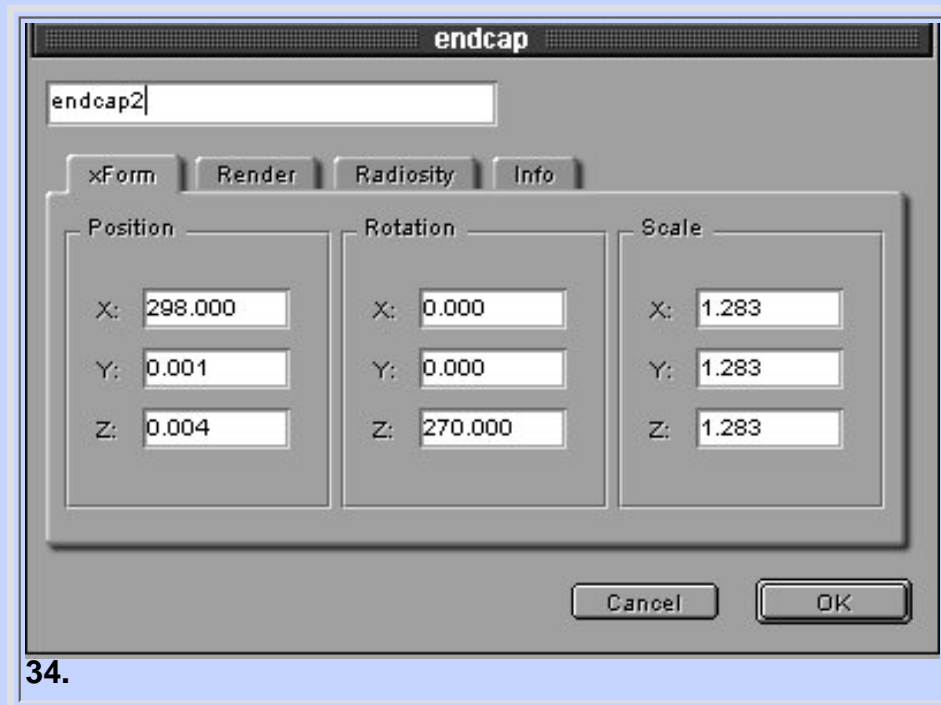
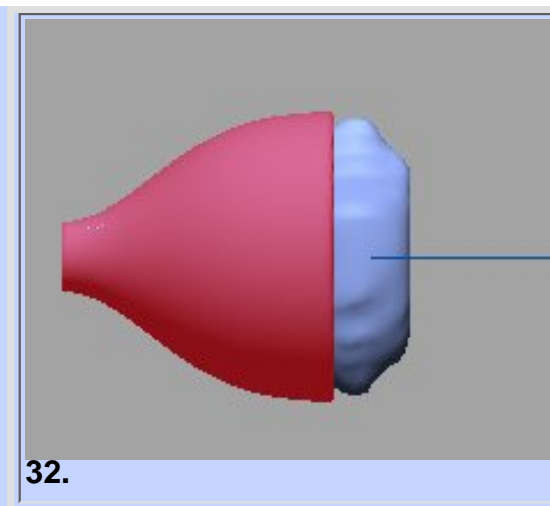
Plasma Tube 3

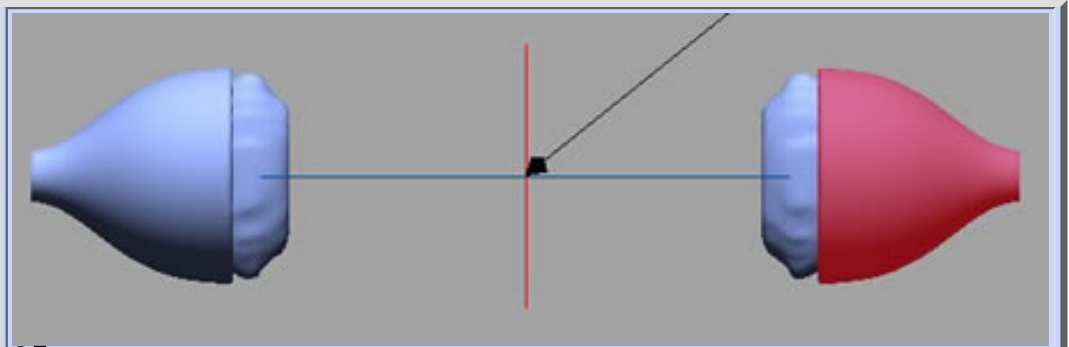
Now on the project list there will be two items named endcap, right click on the one highlighted and go to the objects properties menu. In the properties menu on the xform tab remove the minus sign from the position X column and change the Z Rotation to 270.000 You'll noticed the Y and Z position changed a little, that came from scaling. Also change the name to endcap2 and click OK **(pic. 34)**

Now the second end cap should be rotated and in place like the example below. **(pic. 35)**

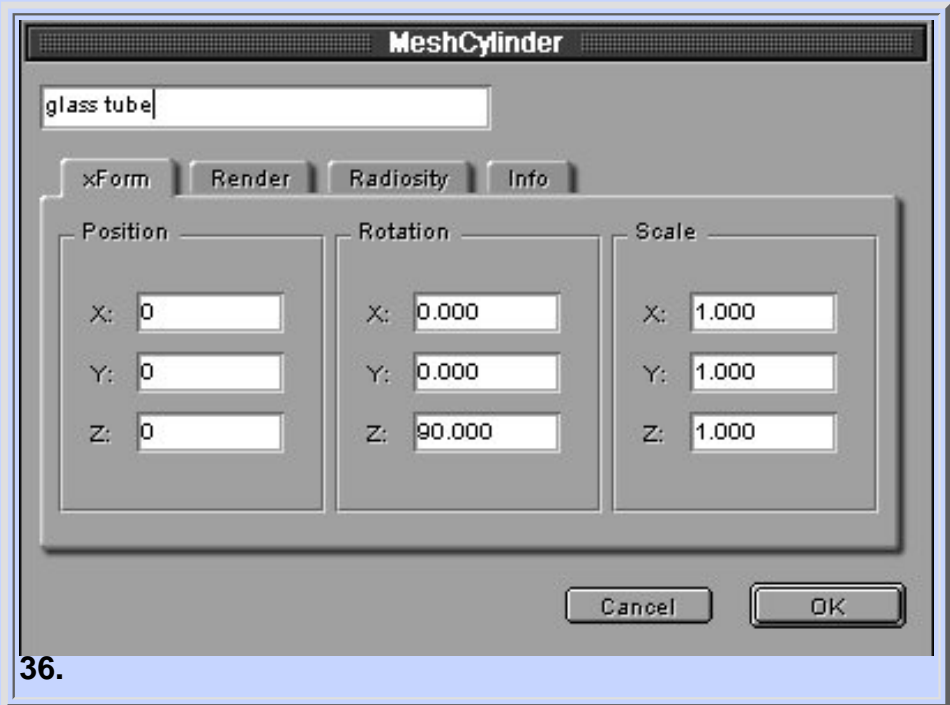
Now will make a tube to connect the two endcaps together. Go to the camera view and create another cylinder, then go to properties menu and put all 0's in the XYZ Position and put 90.000 in the Rotation Z column and rename it to glass tube. **(pic. 36)**

Continued [Begin 2](#) [3](#) [4](#) [5](#) [6](#) [7](#) [8](#)





35.



36.